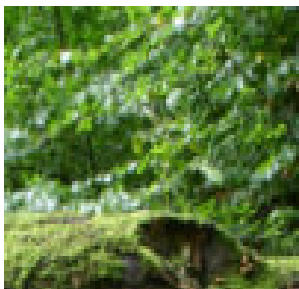


Christ-Centered Change



Coaching Services

- Coaching Sessions
- By Phone
- In Person (St. Louis)
- One on One
- Couples
- Groups



New Beginnings Coaching

Bill Kuntz, M.S., LCSW,
Licensed Psychologist & Life Coach
6500 Marquette Ave
St Louis, MO 63139
PHONE: (314) 712-1754
E-MAIL: nbcoaching@aol.com



www.ChristianLifeCoachUSA.com

Pray – Protect – Build

In the fourth chapter of the book of Nehemiah it reads: *We prayed to our God, and set a guard as a protection... day and night... Each of the builders had his sword girded at his side while he built... The work is great and widely spread and we are separated... far from one another... Our God will fight for us.*

Nehemiah's words still speak to us today. He was building a wall; we are most likely building families and churches. Often we end up praying only after we have done all we can possibly think of doing. But if we will start with prayer, we are more likely to sense God's direction as we work to protect those we care about and build a life that will honor God.

Ultimately, only those efforts which God blesses bear fruit. Have you ever felt like you were spinning your wheels and getting nowhere fast? Even worse, have you ever been so frustrated or unfulfilled that you took things into your own hands and made a huge mess of your life?

Pray for direction and God's provisions, do what you can to protect those you love, and build up your family, church, and community by being the person God has called you to be.

God's work will continue until Christ returns. We, as the Body of Christ, must work to defend the weak, rebuild what the enemy has destroyed, and stand united in love. With the joy of the Lord and the knowledge that in Him we cannot fail, let us demolish the devil's strongholds and push back the darkness. Let's all continue to pray, to protect, and to build - with zealous love for God and for one another.

-Bill